

# Sefton Council – Capital Development

## Business and Partner Engagement Event

20<sup>th</sup> February 2025

# **Councillor Marion Atkinson**

## **Leader, Sefton Council**

# **Welcome**

**Peter Moore**

**Asst. Director, Highways and Public  
Protection**

**Our Highways Investment Programme**

# Highway Asset Maintenance & Improvement



- Approximately £8.5m p.a. spend
- Highway Maintenance and construction
- Landscape & Grounds Maintenance
- Drainage works and maintenance
- Signs, nameplates, guardrails etc.
- Street Lighting
- Software, hardware, data / intelligence, specialist surveys
- Professional, Technical & Support Services
  
- Term and Individual Contracts procured through The Chest and established Frameworks



# Major Schemes and Projects

- Approximately £60m+ Capital Programme
- Current Major Schemes:
  - Maritime Corridor – Phase 1
  - Southport Eastern Access – Phase 1
  - Les Transformation de Southport – Phase 1
  - A59 Corridor Improvement Scheme
- Electric Vehicle Charging Infrastructure
- Low Carbon Transport Strategy
- Local Cycling & Walking Infrastructure Plan
- Term and Individual Contracts procured through The Chest and established Frameworks



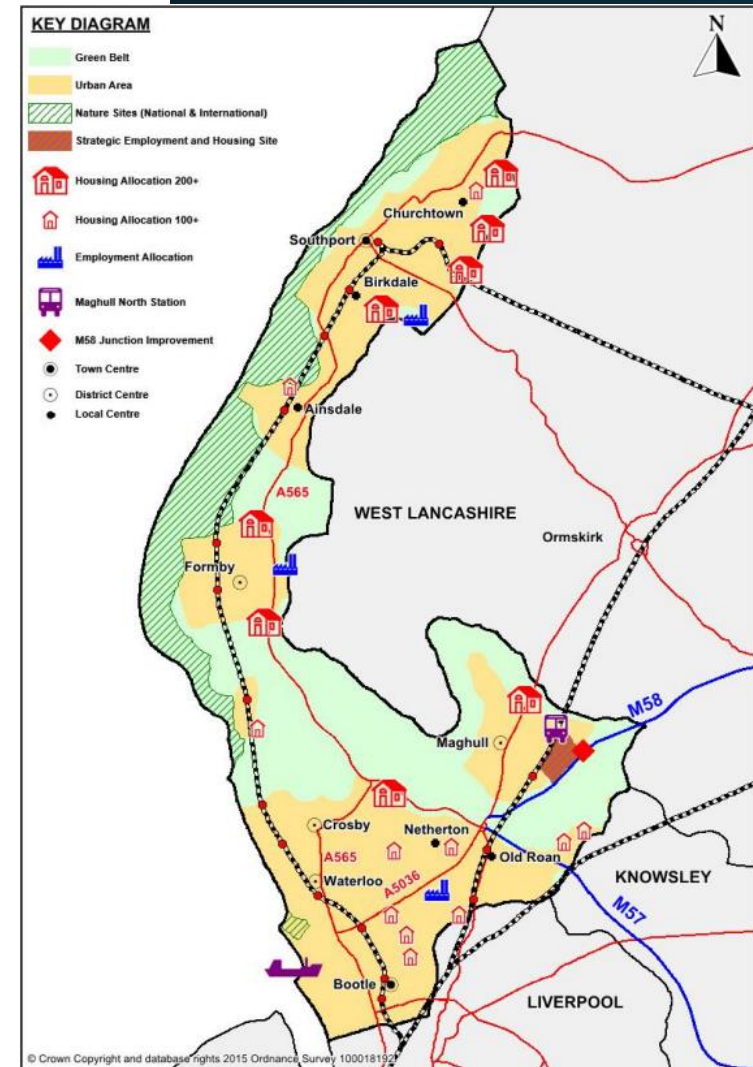
**Stuart Barnes**

**Asst. Director, Economic Growth and  
Housing**

**Regeneration and Housing**

# Stuart Barnes – Assistant Director Economic Growth & Housing

“So what’s going on in  
Sefton”?



# South Sefton

Town Centre Regeneration

Maritime and logistics

Strategic Employment

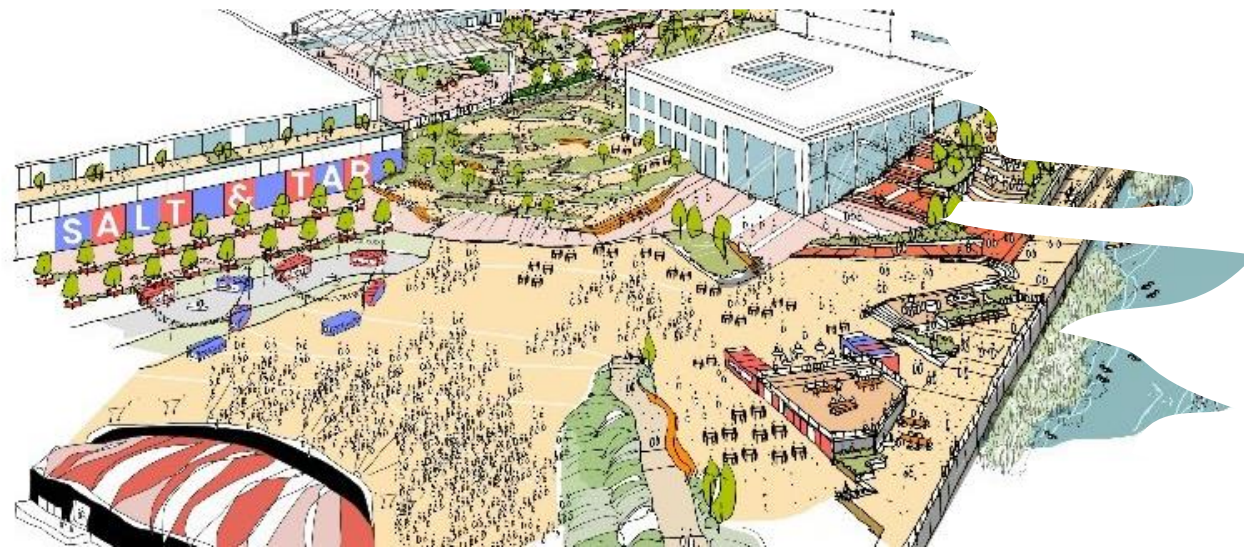
Residential Developments

Retail and Leisure

Events

Education





# Bootle Town Centre Regeneration





Residential  
Sector booming



# Maritime Sector

# East Sefton

Strategic Employment

Residential Developments

Health and Life Sciences

Education



# Educational Investments



Multiple large scale housing developments

# Merseycare Health and Life Sciences Park

- C£1B investment
- 4000+ jobs
- Unique facility in whole of Europe





# North Sefton

Town Centre Regeneration

Multiple Housing Schemes

Strategic Employment Site developments

Leisure

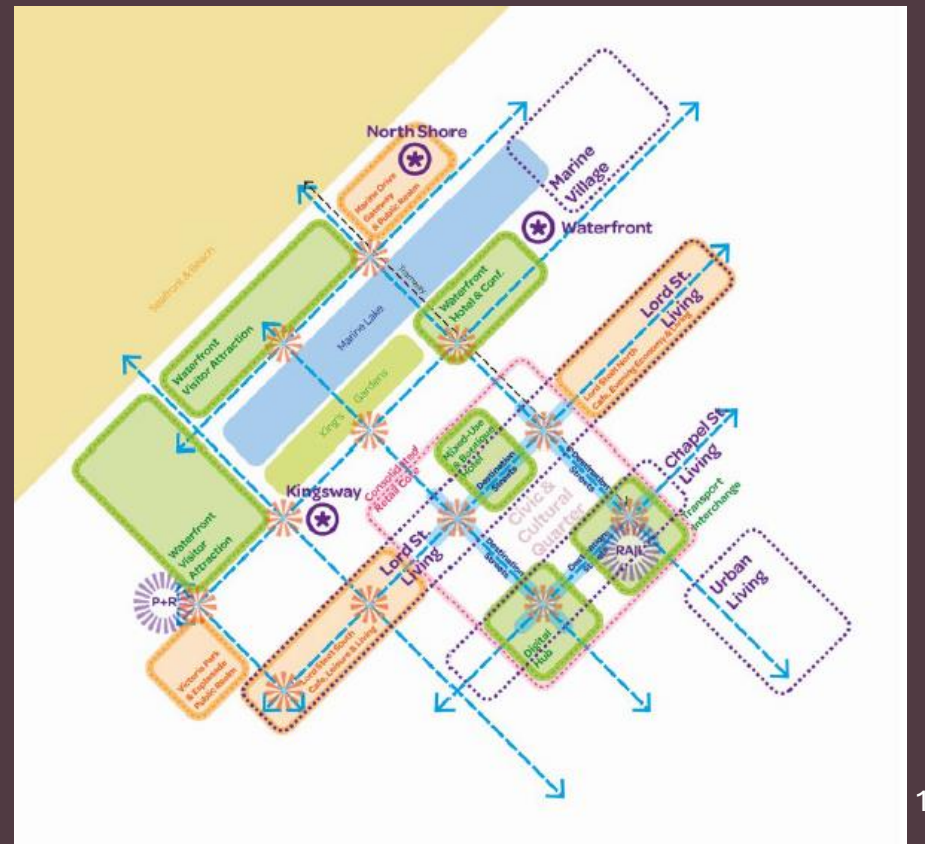
Events

Natural Environment



# Council Growth Programme







Strong and growing housing offer



# Sporting Sefton

Aintree Racecourse

Royal Birkdale – The Open 2026

Formby Hall Golf Resort and Spa acquisition

Bootle FC, Marine FC, Southport FC

Goodison Legacy

Bramley Moore Dock

Anfield



## Aintree Racecourse: The Grand National

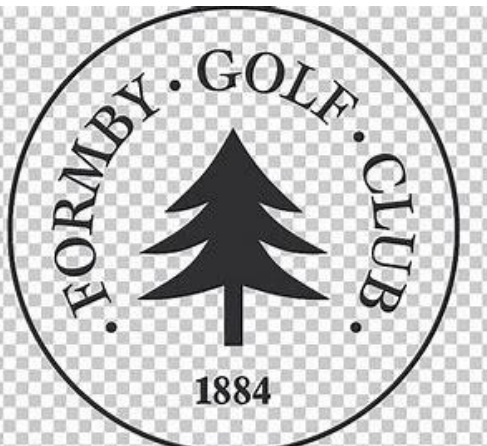
- Ran in Aintree since 1839
- 150,000 visitors
- £60m+ economic impact
- 600m global TV audience
- 7 meetings per year
- Also hosted British Grand Prix 5 times (last in 1962)



FIRWOOD  
BOOTLE C.C.



MARINE AFC  
1894







**Tony Howard**

**GSL – The Cove Resort, Southport**

**Our Shared Vision and Values**

**Stephen Watson**  
**Executive Director – Regeneration,  
Economy and Assets**

**Property and Strategic Asset  
Management**

# Property and Strategic Asset Management

- Asset Management Strategy
- Capital project development and delivery
- Building operations, facilities management and maintenance
- Energy management
- Statutory compliance

# Our Priorities

- A beautiful place to visit, live in, work in, invest in - one of the best places to grow up in the country.
- Quality training, employment and career opportunities.
- Support with Council strategies – e.g. Equality, Diversity and Inclusion; Child Poverty Strategy.
- Climate emergency and Net Zero.
- Local spend
- Value for money

# Our Questions For You

- How can you help us achieve these objectives?
- How can we help you achieve your objectives?
- What would make Sefton an even more attractive place to do business?
- What would make Sefton Council an even more attractive customer and partner with whom to work?

**Thank you**